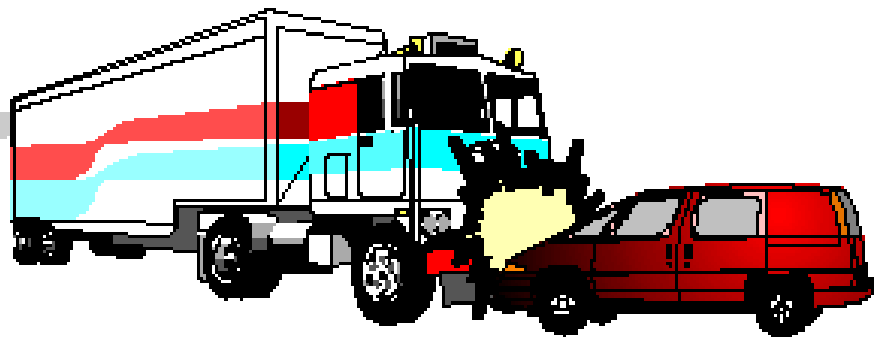


High Crash Corridor



You are operating on a segment of highway identified by the Federal Motor Carrier Safety Administration and the Georgia Department of Public Safety, MCCD as a high crash corridor. This driver/vehicle inspection is part of a cohesive, nationwide effort to reduce accidents, deaths and injuries involving commercial motor vehicles. Your cooperation in this inspection process is greatly appreciated.

According to the Federal Motor Carrier Safety Administration, Georgia ranks fifth in the nation in number of fatal accidents involving commercial motor vehicles. The top twenty Georgia counties where these fatal accidents occurred are located predominantly on interstate highways or in the more heavily populated areas of the state.

A focus group for the Federal Motor Carrier Safety Administration advises that commercial vehicle accident statistics show that moving violations cause the greatest number of truck-at-fault accidents. In any event, most at-fault commercial vehicle crashes evolve from driver error.

A CASE IN POINT

In the early morning hours of July 1995, a tractor-trailer rig grossing 80,500 pounds was traveling south on I-75 in Cook County, Georgia. The driver dozed off and struck a pick-up truck in the rear. The gas tank on the pick-up truck exploded on impact. The pick-up then left the roadway and collided head-on with a pine tree.

In the aftermath, mangled bodies of adults and children littered the highway and roadside. The end result: six fatalities and eight serious injuries.

One of our officers assisted the Georgia State Patrol with the accident investigation. Among the violations noted by our officer were: false log book, 70% defective brakes, and defective steering components. A major contributing factor to the accident was the driver's failure to obtain adequate rest.

Along with these violations, the driver of the tractor-trailer was charged with six counts of vehicular homicide and eight counts of serious injury by motor vehicle.

Commercial vehicle safety is a vital concern to the public, industry and government alike. It is paramount that each entity and individual do their part in ensuring the safety of the nation's motorists.

HOW CAN YOU HELP?

1. Obey all traffic laws;
2. Drive well-maintained, safe equipment;
3. Obtain adequate rest;
4. Be considerate of other motorists.



Safety Message from Project P.I.E.
(Public Information and Education)
FACT SHEET #038
Georgia Department of Public Safety
Motor Carrier Compliance Division
P.O. Box 1456
Atlanta, Georgia 30371-1456
(404) 624-7211 www.dps.georgia.gov